



From Nanowires to Nanotubes

A new concept for compound nanotube formation based on the Kirkendall effect

Hollow nanocrystals that can function as highly-efficient catalysers or transport containers for chemical agents are in great demand nowadays. Scientists from the Max Planck Institute of Microstructure Physics have created a procedure for combining chemicals to produce high quality nanotubes in large quantities. The researchers took advantage of the Kirkendall effect, which occurs during inter-diffusion between two solids. They used the effect to take nanowires of a certain chemical composition in the core and the shell, and produce nanotubes of a more complex composition. The scientists showed that this method can also be used to efficiently produce nanowires themselves (Nature Materials, August 2006).

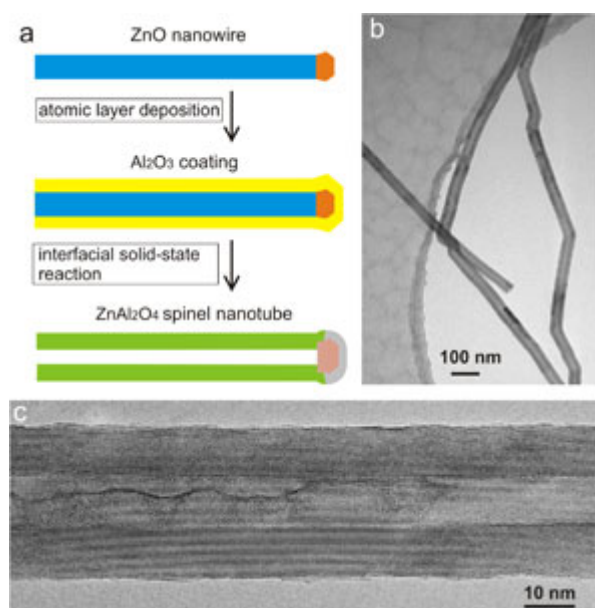


Fig.: Steps in producing nanotubes from nanowires (a). A transmission electron microscope allows us to see how spinel nanotubes are created after thermally treating ZnO-Al₂O₃ core-shell-nanowires (b, c). Most of the one-dimensional nanostructures produced are hollow over the entire length of the previous nanowire. The researchers created free-standing nanotubes, 20 micrometres long, with a diameter of 30 to 40 nanometres and walls 10 nanometres thick. These nanotubes feature excellent crystallinity and uniformity. The results show how the

Max Planck Society
for the Advancement of Science
Press and Public Relations Department

Hofgartenstrasse 8
D-80539 Munich

PO Box 10 10 62
D-80084 Munich

Phone: +49-89-2108-1276
Fax: +49-89-2108-1207
presse@gv.mpg.de
Internet: www.mpg.de

Responsibility for content:
Dr. Bernd Wirsing (-1276)

Executive Editor:
Dr. Andreas Trepte (-1238)

Online-Editor:
Michael Frewin (-1273)

ISSN 0170-4656

Kirkendall effect can be used generally to produce all kinds of hollow nano-objects.

Image: Max Planck Institute for Microstructure Physics

Compound nanotubes can be produced in various ways: rolling up layered materials, coating pores in templates, or eliminating the core of a core-shell nanowire. In the case of ternary compound nanotubes, most of these methods have limitations. They may need layered materials or templates (e.g., porous alumina). Or the nanotubes produced may have an insufficiently small aspect ratio. Frequently the crystallinity of the nanotubes produced is poor - that is, they consist of many grains that have different crystallographic orientations. Scientists at the Max Planck Institute of Microstructure Physics in Halle, Germany, have devised a generic technique for generating nanotubes with very good crystallinity of a ternary compound (i.e., a compound that consists of three different chemical elements).

The scientists fabricated ultra-long single-crystalline ZnAl_2O_4 spinel nanotubes (total diameter: ~ 40 nm, wall thickness: ~ 10 nm). Spinel is a ternary compound of type AB_2O_4 that crystallises in a specific cubic structure. Nanotube formation is based on an interfacial solid-state reaction of core-shell $\text{ZnO-Al}_2\text{O}_3$ nanowires involving the Kirkendall effect. This effect arises when the interdiffusion between two solids is realized via vacancy transport and an asymmetry of the related diffusion rates occurs which finally results in the formation of pores. The researchers have used this effect to produce hollow nanowires, i.e. nanotubes. The latter grow due to the fact that the generated pores cannot leave the nanowires, which is a consequence of the spatial confinement given by the specific reaction geometry involving cylindrical symmetry.

The method has a number of advantages. For example, the required voids need not be produced beforehand. This, in the end, allows scientists to fabricate three-dimensional nanostructures of complex shape. In addition, nanotubes with large aspect ratios can be obtained, and the method can be scaled up to produce large volume quantities useful for applications. Moreover, ZnO (part of medical salves) is very biocompatible. Finally, the method can be applied to many other types of ZnO- or MgO-based spinel nanostructures with adopted chemical composition and interesting properties.

[EC]

Original work:

H.J. Fan, M. Knez, R. Scholz, K. Nielsch, E. Pippel, D. Hesse, M. Zacharias; U. Gösele,
Monocrystalline spinel nanotube fabrication based on the Kirkendall effect.
Nature Materials 5 (2006) 627

Contact:

Dr. Margit Zacharias
[Max-Planck-Institute of Microstructure Physics, Halle/Saale](#)
E-mail: zacharias@mpi-halle.de